



# **BRCP**

## **Administrative Draft**

### **(Chapter by Chapter Overview of Revisions)**

Presentation to:

**BRCP Stakeholder Committee**

June 7, 2011

# ▶ Chapter 1. Introduction

---

- ▶ Background, purpose, BRCP goals, scope, and regulatory context
- ▶ Various minor edits and updates; added description of Porter-Cologne Act and National Historic Preservation Act
- ▶ Added permit duration (40 years)
- ▶ Added list of Appendices

## ▶ Chapter 2. Covered Activities

---

- ▶ Describes activities covered under the BRCP that could impact covered species
- ▶ Updated to include water district activities
- ▶ Added Agricultural Services activities
- ▶ Added detail to description of the activities
- ▶ Revised graphics

## ▶ Chapter 3. Ecological Baseline Conditions

---

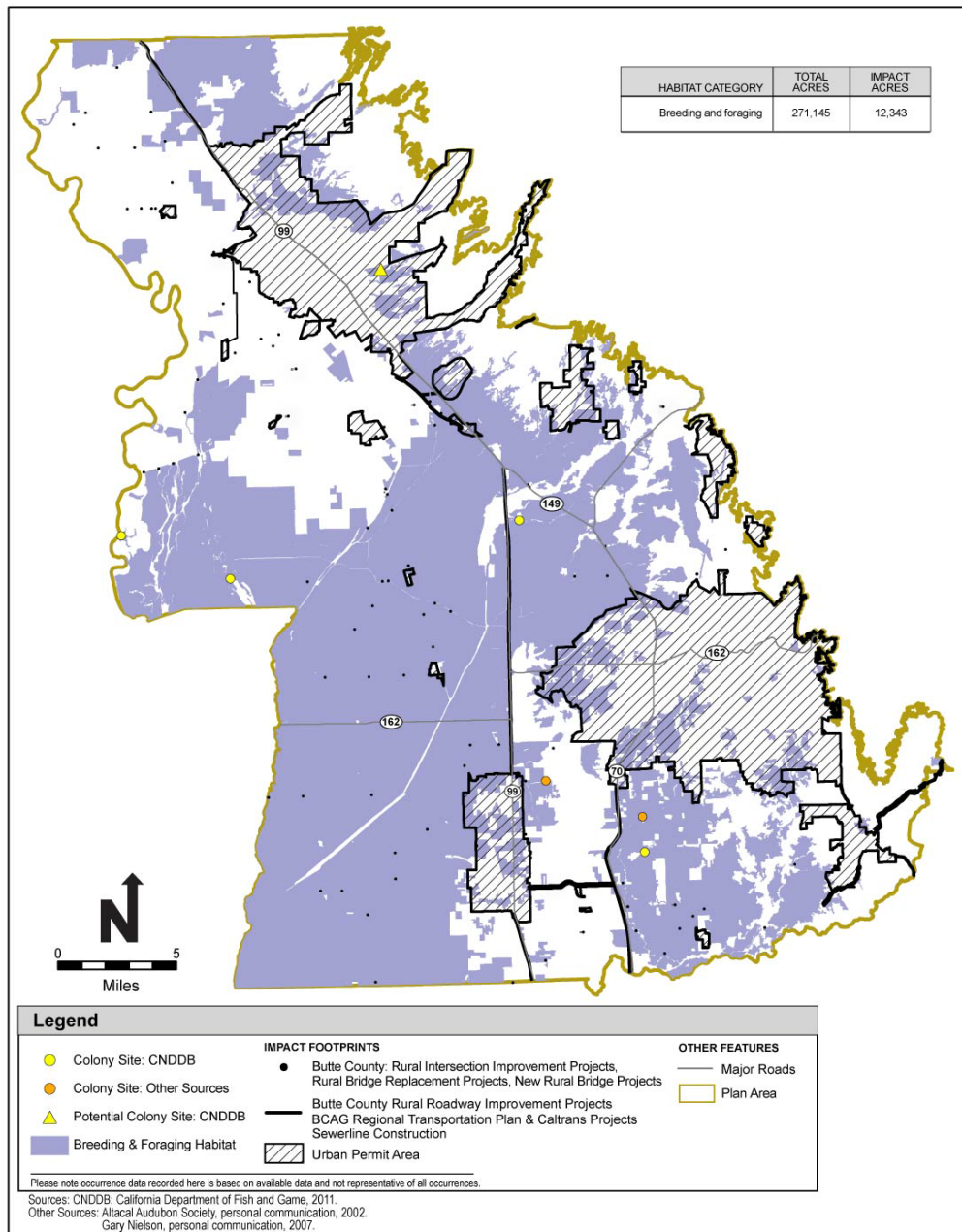
- ▶ Describes existing physical and biological conditions of the Plan Area, including natural communities, the process for identifying covered species, and local concern species
- ▶ Updated graphics and text
- ▶ Added more detail to description of land cover type mapping methods

## ▶ Chapter 4. Impact Assessment and Estimated Level of Take

---

- ▶ Describes impact assessment methods and effects on natural communities and covered species within and outside of UPAs
- ▶ Updated to include revisions to covered activities since 2009 draft
- ▶ Revised to reflect application of avoidance and minimization measures
- ▶ Section 4.5, *Requested Level of Take and Permit Coverage*, and Section 4.6, *Cumulative Impacts*, to come.
- ▶ New graphics to illustrate impacts on resources
- ▶ BCM effects analysis to come

# Tricolored Blackbird Impacts



**Figure 4-17. Tricolored Blackbird: Direct Impacts of Covered Activities**

## ▶ **Chapter 5, *Conservation Strategy***

---

- ▶ Describes the BRCP Conservation Strategy elements
- ▶ Oak woodland and savanna objectives revised to address non-covered native species
- ▶ Added mitigation requirements for natural communities and covered species
- ▶ Added habitat restoration objectives
- ▶ Added sections on natural community and covered species outcomes
- ▶ Many new graphics illustrating outcomes
- ▶ AMMs to be updated
- ▶ BCM to come

# Riparian Natural Community Outcomes

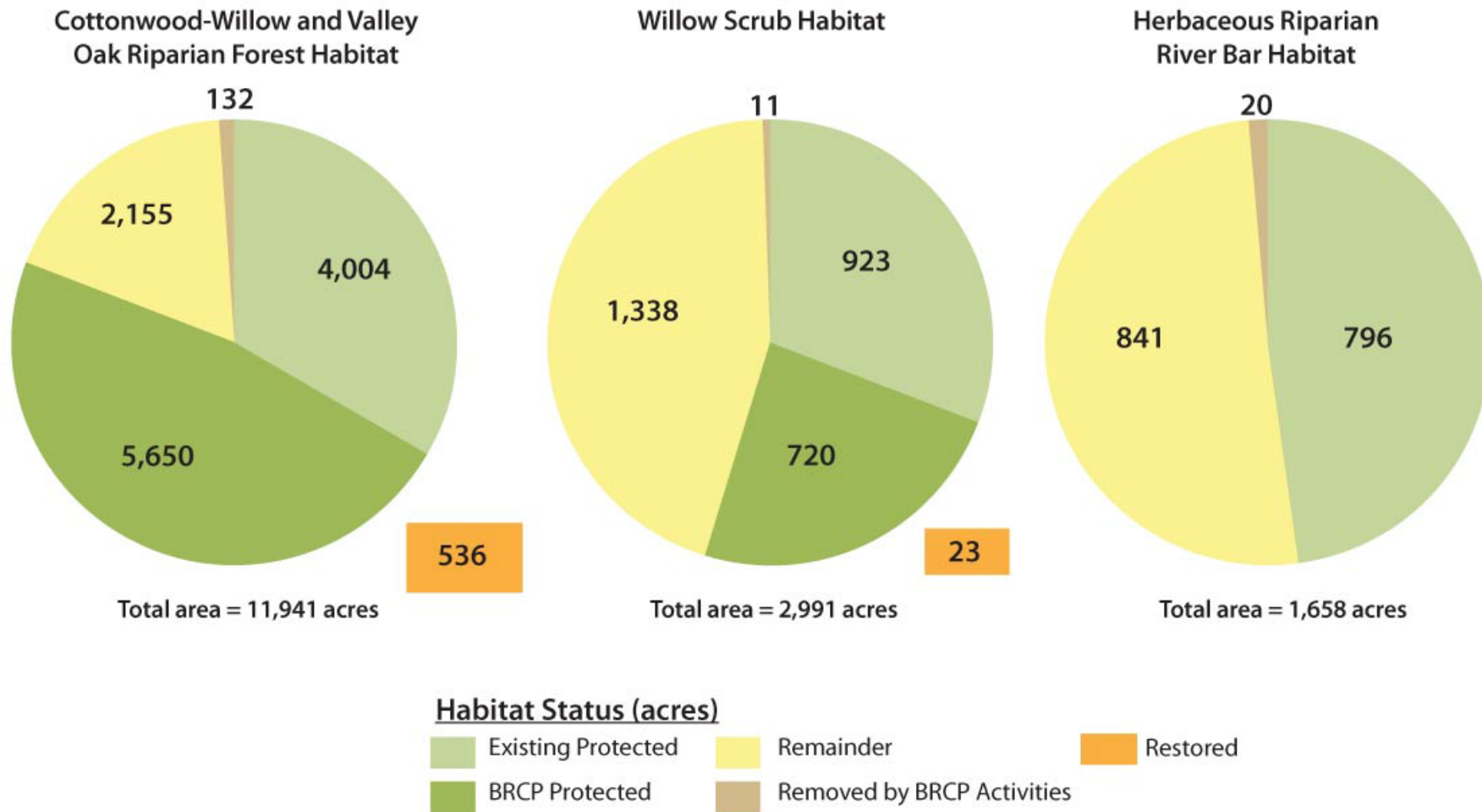
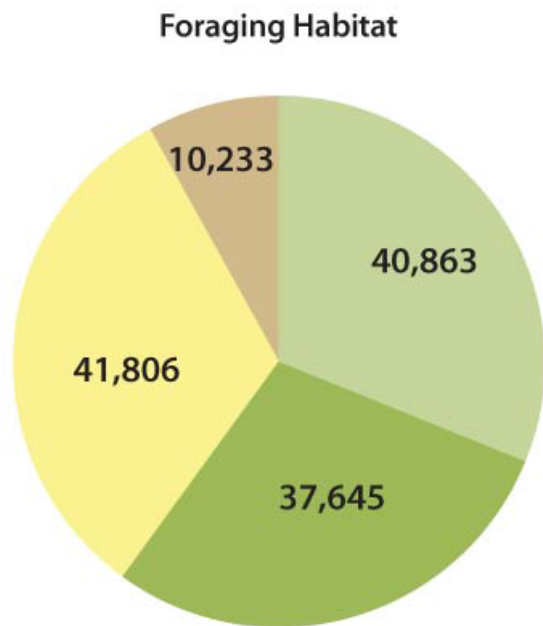
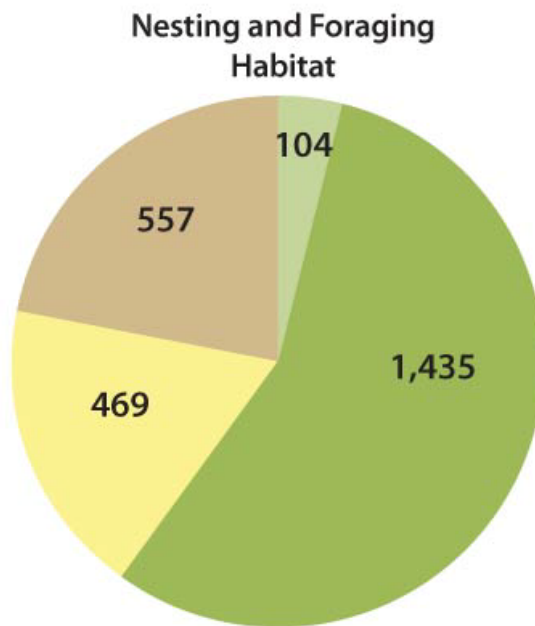


Figure 5-9. Riparian and Willow Scrub Habitat in the Plan Area with full BRCP Implementation

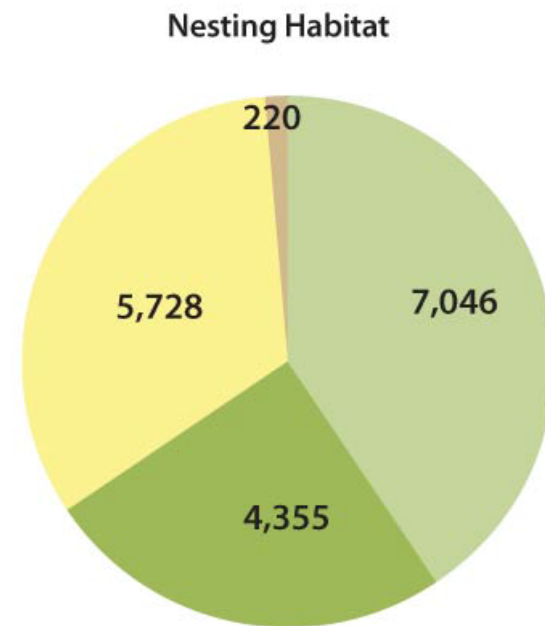
# Swainson's Hawk Outcomes



Total area = 130,548 acres



Total area = 2,565 acres



Total area = 17,349 acres

**Habitat Status (acres)**

- Existing Protected
- BRCP Protected
- Remainder
- Removed by BRCP Activities

Figure 5-26. Swainson's Hawk Habitat in the Plan Area with full BRCP Implementation

## ▶ Chapter 6, *Plan Implementation*

---

- ▶ Describes:
  - 6.1 - Implementation schedule
  - 6.2 - Reporting Requirements
  - 6.3 - Changed circumstances and remedial measures
  - 6.4 – Assurances (to come)
  - 6.5 - Future Recovery Plans
  - 6.6 – Permit Duration & Process for modifications and amendments
- ▶ Updated and added more detail to changed circumstances (esp. for flood, drought, and water availability)
- ▶ Added description of implementation schedule (more detail to come)
- ▶ Assurances requested section is to come

## ▶ **Chapter 7, *Implementation Structure***

---

- ▶ Describes the:
  - BRCP Implementing Entity, structure, and functions
  - BRCP implementation governance structure
- ▶ Revised to include updated description of the Implementing Entity (established within existing BCAG) and its functions
- ▶ Revised to include updated description of relationship of the Implementing Entity to other new and existing entities

# ▶ Chapter 8, *Implementation Costs and Funding Sources*

---

## ▶ Describes:

- BRCP implementation costs in 5-year increments by cost category
- Implementation funding sources and stream
- Adaptive funding plan
- Mechanisms for in-perpetuity funding (e.g., endowment funding) for conservation lands maintenance and management

## ▶ Chapter 8 is under development

# ▶ **Chapter 9, *Alternatives to Take Considered and Rejected***

---

## ▶ Describes:

- ▶ Alternatives considered under the Plan that could result in less take
  - ▶ Process and rationale for selecting the proposed conservation strategy
- ▶ ESA section 10 requirement
- ▶ Chapter 9 is under development

## ▶ **Chapter 10, *Independent Science Advisory Process***

---

- ▶ Describes the BRCP Independent Science Advisory Process (new chapter)
- ▶ Includes description of 2007 ISA recommendations to Chapter 3, *Ecological Baseline Conditions*, and Appendix A, *Covered Species Accounts*
- ▶ Will be revised to incorporate description of subsequent ISA processes (e.g., recommendations to Chapter 5, *Conservation Strategy*)

## ▶ Chapter 11, *List of Preparers*

---

- ▶ New chapter
- ▶ Describes participants in the BRCP development process
  - Steering Committee members
  - Stakeholder Committee members
  - Technical consultants
  - Other contributors
  - Please check that your names and organizations have been identified correctly

## ▶ Chapter 12, *References*

---

- ▶ References for all cited information in Chapters 1-10 (appendices have their own reference section)
- ▶ Will continue to be updated as needed to reflect additional references that may be added in subsequent drafts

## ► Appendices

---

- ▶ Appendix A, *Covered Species Accounts*
  - Revised to include updated ecological information and descriptions of species habitat models
- ▶ Appendix B, *Evaluation of Species Considered for Coverage*
- ▶ Appendix C, *Common and Scientific Names of Species Mentioned in the Text*
- ▶ Appendix D, *Native Species Supported by BRCP Natural Communities*
- ▶ Appendix E, *Survey Protocols and Mitigation Guidelines*
  - To come—comprised of PDFs of documents

## ▶ **Appendices** (cont.)

---

- ▶ Appendix F, *Implementation Costs Supporting Materials*
  - To come following completion of draft implementation cost estimates
- ▶ Appendix G, *Independent Science Advisors Reports*
  - Includes first ISA Report; will be updated to include subsequent reports
- ▶ Appendix H, *Butte Regional Conservation Plan Planning Agreement*
- ▶ Appendix I, *Feasibility Study for Vernal Pool and Swale Complex Mapping*
- ▶ Appendix J, *Glossary of Terms*
  - To come

## ▶ Next Steps

---

- ▶ Complete BCM strategy
- ▶ Prepare Chapter 8, *Implementation Costs and Funding Sources*, Chapter 9, *Alternatives to Take Considered and Rejected*, and other outstanding sections
- ▶ Conduct technical reviews with USFWS, NMFS, and DFG
- ▶ Address ISA recommendations to Chapter 5, Conservation Strategy
- ▶ Address Stakeholder Committee and Applicant comments to the Administrative Draft BRCP
- ▶ Initiate Public Workshops
- ▶ Initiate EIR/EIS analysis of BRCP actions

## **Questions & Discussion**