

DRAFT Sacramento Splittail

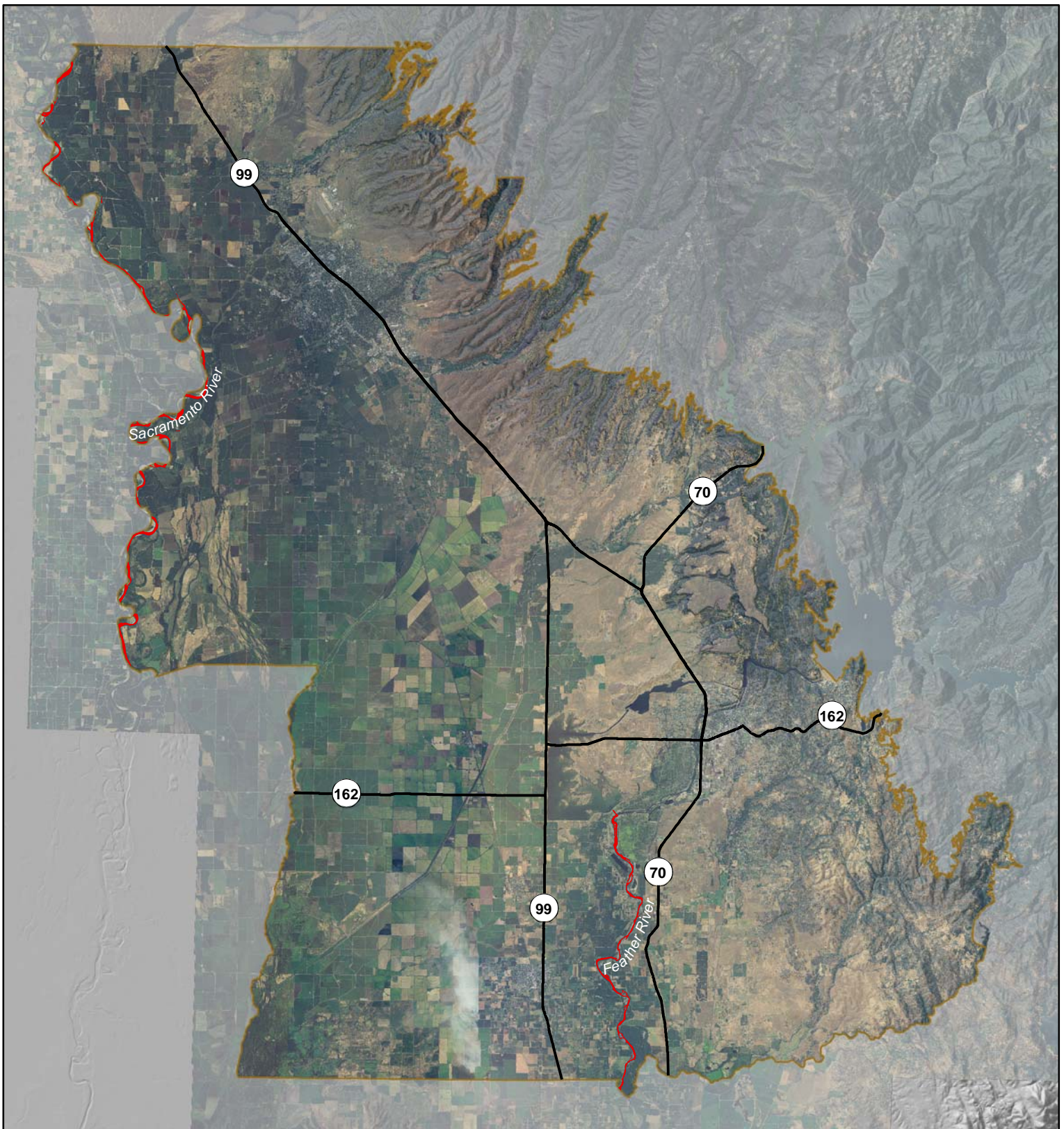
Rearing/Migration/Potential Spawning Habitat: Splittail exist in the mainstem Sacramento River along the western edge of the planning area and in the Feather River as far upstream as just below the Thermalito Afterbay Outlet (A. Seesholtz pers. comm., B. Oppenheim pers. comm.). Based on the size of these fish, it is thought that these splittail are spawning here or close by although no spawning has been observed directly. There have been no confirmed sightings of splittail upstream of the Thermalito Afterbay Outlet, possibly because flows above the Outlet (the Low Flow Channel) are too stable to cause a rise in water levels to a point at which spawning and rearing would likely occur (A. Seesholtz pers. comm.).

Assumptions: Data from DFG (CNDDDB 2007) were used for this model because the agency is the California agency responsible for managing Sacramento splittail and, as such, is considered to be the authority on the distribution of the species and its habitat. Data gaps in the CNDDDB (2007) database were augmented with information from Moyle 2004) and personal communication with splittail experts.

When floodplain inundation does not occur during drier years, adult splittail migrate farther upstream in the Sacramento River, Feather River, and into Butte Creek (downstream of the planning area) to find suitable habitat along channel margins or flood terraces (Feyrer et al. 2005).

References

- CNDDDB (California Natural Diversity Database). 2006. California Department of Fish and Game. Sacramento, CA.
- Feyrer, F., T. Sommer, and R. D. Baxter. 2005. Spatial-temporal distribution and habitat associations of age-0 splittail in the lower San Francisco watershed. *Copeia* 2005(1):159-168.
- Moyle, P. B., R. D. Baxter, T. Sommer, T. C. Foin, and S. A. Matern. 2004. Biology and population dynamics of the Sacramento splittail (*Pogonichthys macrolepidotus*) in the San Francisco Estuary: a review. *San Francisco Estuary and Watershed Science* 2(2):1-47.
- Oppenheim, B. pers. comm. Fisheries Biologist, NMFS. Email to Randy Baxter on 9/15/03 about and adult splittail freshly killed by an angler and thrown up on a river bank just below Thermalito Afterbay Outlet.
- Seesholtz, A. pers. comm. Environmental Scientist, DWR, Feather River project. Phone call with Rick Wilder on 9/20/07 regarding fish use of the Feather River.



Legend

- █ Rearing, migration, and potential spawning habitat
- Planning Area Boundary

Sources: 1. CNDDDB, California Department of Fish and Game, 2007.
 2. Moyle et al. 2004.

DRAFT
**Figure A.28: Sacramento Splittail
 Habitat Model**

This map presents outcomes of a draft habitat model that is described in the Covered Species Accounts of the HCP/NCCP. The purpose of the model is to identify areas within the planning area where the species occurs or could occur based on known habitat requirements.

